



General Description

The AFE1065L is a 7-channel ultra low capacitance rail clamp ESD protection diodes array. Each channel consists of a pair of ESD diodes that steer positive or negative ESD current to either the positive or negative rail. A Zener diode is integrated in to the array between the positive and negative supply rails.

In the typical applications, the negative rail pin (assigned as GND) is connected with system ground. The Positive ESD current is steered to the ground through an ESD diode and Zener diode and the positive ESD voltage is clamped to the Zener voltage.

The AFE1065L is idea to protect high speed data lines.

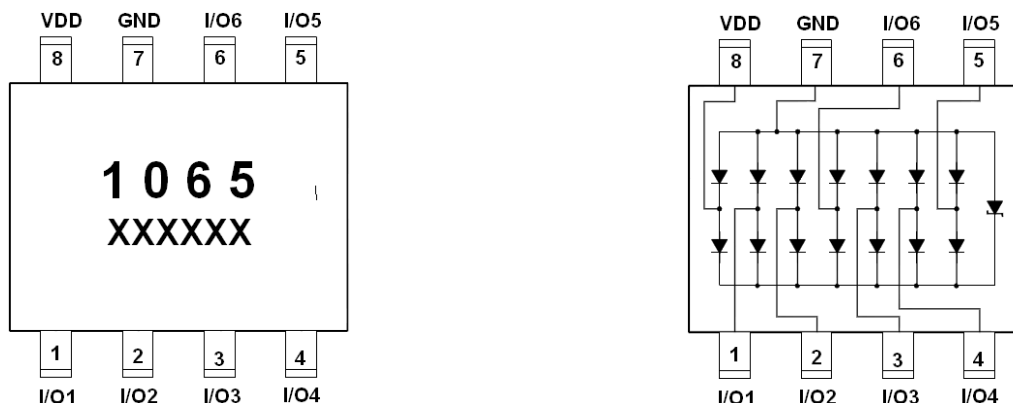
Features

- 7 channels of ESD protection
- Provides ESD protection to IEC61000-4-2 level 4
±15 KV air discharge
± 8 KV contact discharge
- Channel I/O to GND capacitance: 0.4pF(Max)
- Channel I/O to I/O capacitance: 0.25pF(Max)
- Low clamping voltage
- 5V low operating voltage
- Improved Zener structure
- MSOP-8-185-0.65 package
- ROHS compliant

Application

- High Speed Communication Line Protection
- USB 3.0 Power and Data Line Protection
- Monitors and Flat Panel Displays Notebook Computers
- Video Line Protection & Base Stations
- HDSL, IDSL Secondary IC Side Protection
- Microcontroller Input Protection
- LCD and camera modules
- 10/100/1000 Ethernet

Pin Description (MSOP-8L)



Ordering Information

Part Ordering No.	Part Marking	Package	Unit	Quantity
AFE1065LMS8RG	1065 xxxxxx	MSOP-8L	Tape & Reel	3000 EA

- ※ 1065 Specific Device Code
- ※ XXXXXX Lot Code
- ※ AFE1065LMS8RG : 13" Tape & Reel ; Pb- Free ; Halogen- Free



ABSOLUTE MAXIMUM RATINGS

(T_A=25°C Unless otherwise noted)

Parameter	Symbol	Typical	Unit
Peak Pulse Power (t _p = 8/20 μs)	P _{pk}	150	W
Peak Pulse Current (t _p = 8/20 μs)	I _{PP}	5	A
ESD per IEC 61000 – 4 – 2 (Air)	V _{ESD1}	±15	KV
ESD per IEC 61000 – 4 – 2 (Contact)	V _{ESD2}	±8	KV
Operating Junction Temperature	T _J	-55 ~ 125	°C
Storage Temperature Range	T _{STG}	-55 ~ 150	°C

ELECTRICAL CHARACTERISTICS

(T_A=25°C Unless otherwise noted)

Parameter	Symbol	Conditions	Min.	Typ	Max.	Unit
Reverse Working Voltage	V _{RWM}	Any Pin to GND			5	V
Reverse Breakdown Voltage	V _{BR}	I _t = 1mA Any Pin to GND	6			V
Reverse Leakage Current	I _R	V _{RWM} = 5V , T=25°C Any Pin to GND			1	μA
Positive Clamping Voltage	V _{C1}	I _{PP} = 1A , t _p = 8/20 μs Positive pulse Any Pin to GND		8.5	12	V
Negative Clamping Voltage	V _{C2}	I _{PP} = 1A , t _p = 8/20 μs Negative pulse Any Pin to GND		1.8		V
Junction Capacitance Between Channel	C _{j1}	V _R = 0V , f = 1MHz Between I/O Pin		0.2	0.25	pF
Junction Capacitance Between I/O to GND	C _{j2}	V _R = 0V , f = 1MHz Any Pin to GND			0.4	pF



Electrical Parameter

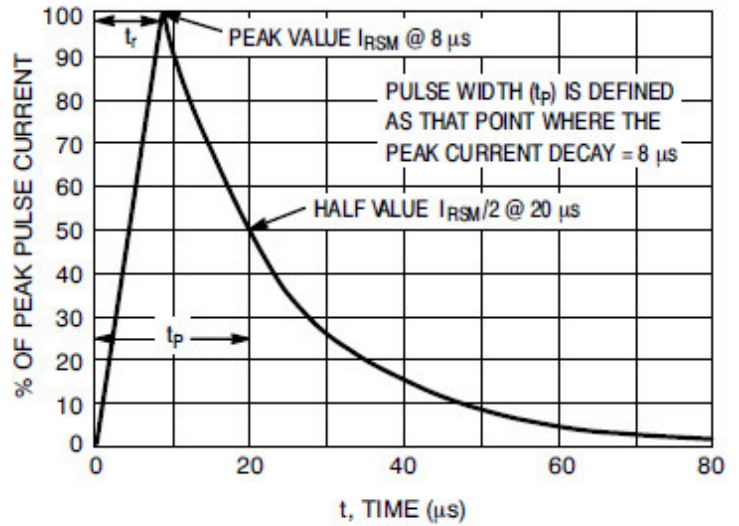
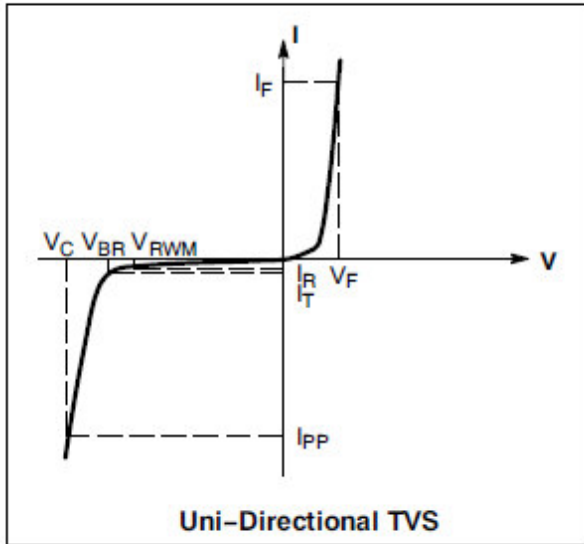


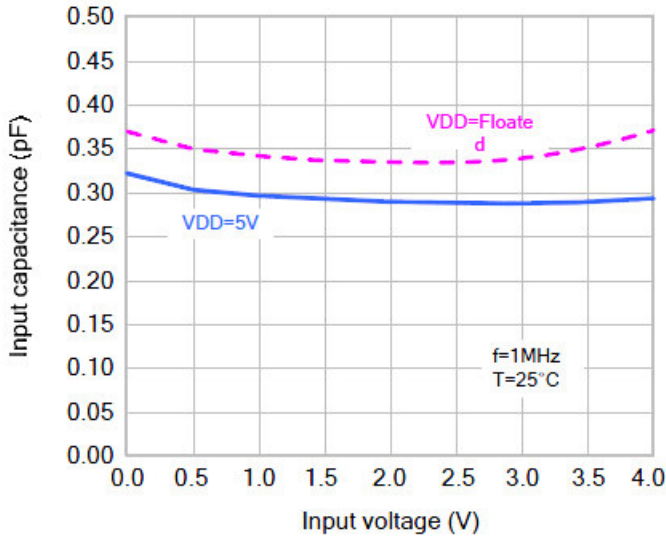
Figure 1. 8 X 20 μ s Pulse Waveform

Symbol	Parameter
I_{PP}	Maximum Reverse Peak Pulse Current
V_C	Clamping Voltage @ I_{PP}
V_{RWM}	Working Peak Reverse Voltage
I_R	Maximum Reverse Leakage Current @ V_{RWM}
I_T	Test Current
V_{BR}	Breakdown Voltage @ I_T
I_F	Forward Current
V_F	Forward Voltage @ I_F

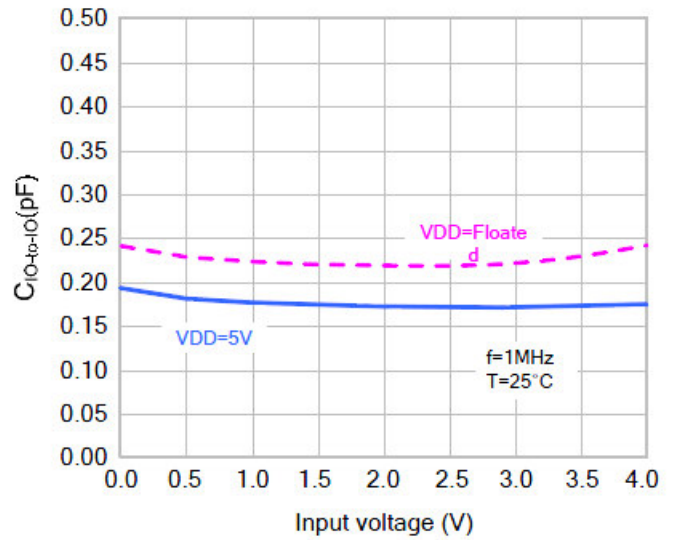


Typical Characteristics

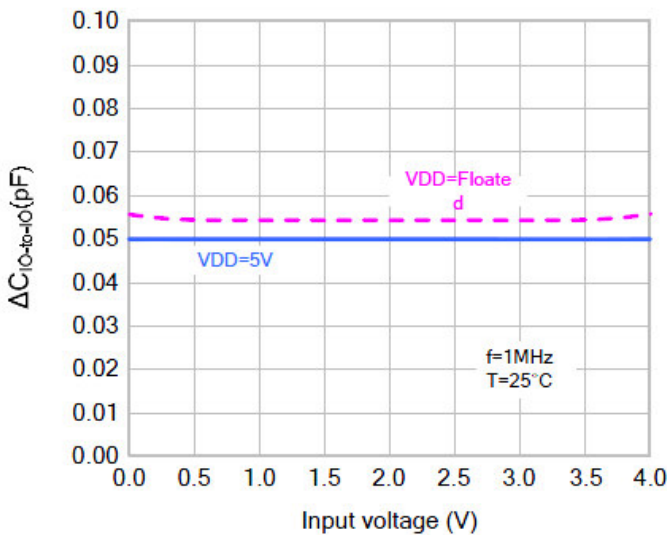
Typical curve of C_{IN} following V_{IN}



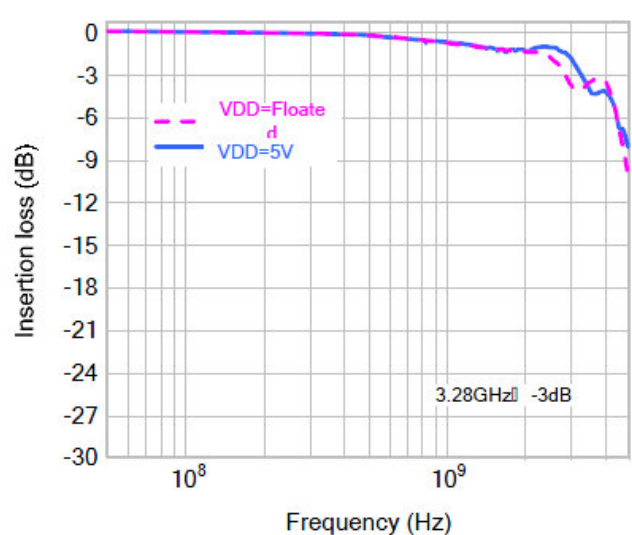
Typical curve of $C_{I/O-to-I/O}$ following V_{IN}



Typical curve of $\Delta C_{I/O-to-I/O}$ following V_{IN}



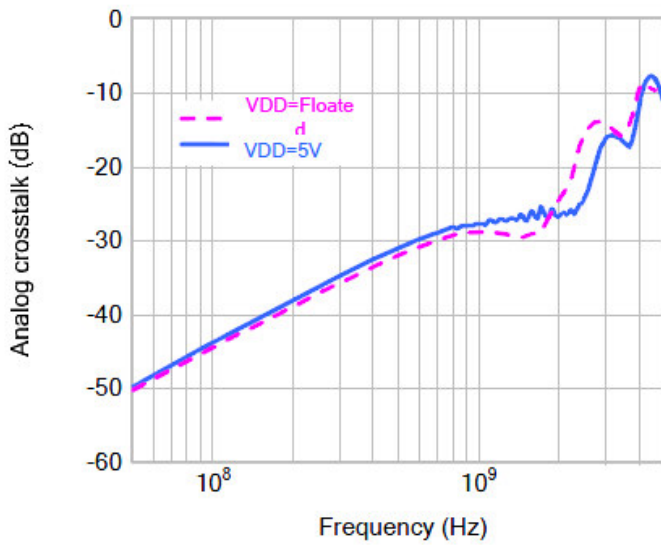
Insertion loss S21(I/O-to-GND)



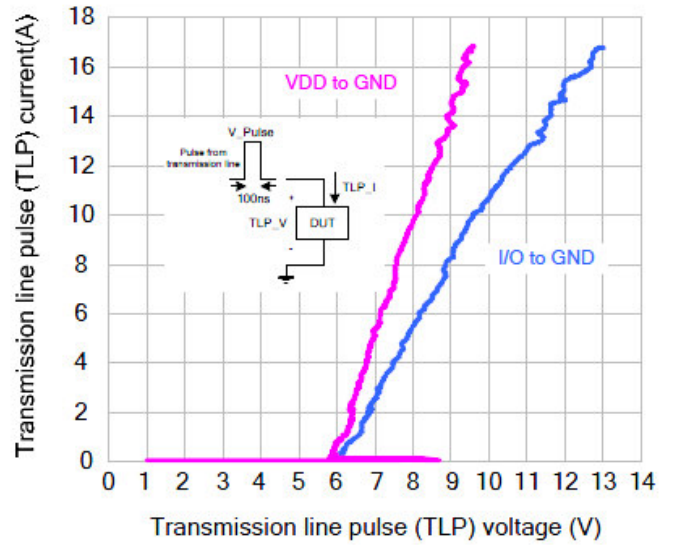


Typical Characteristics

Analog crosstalk

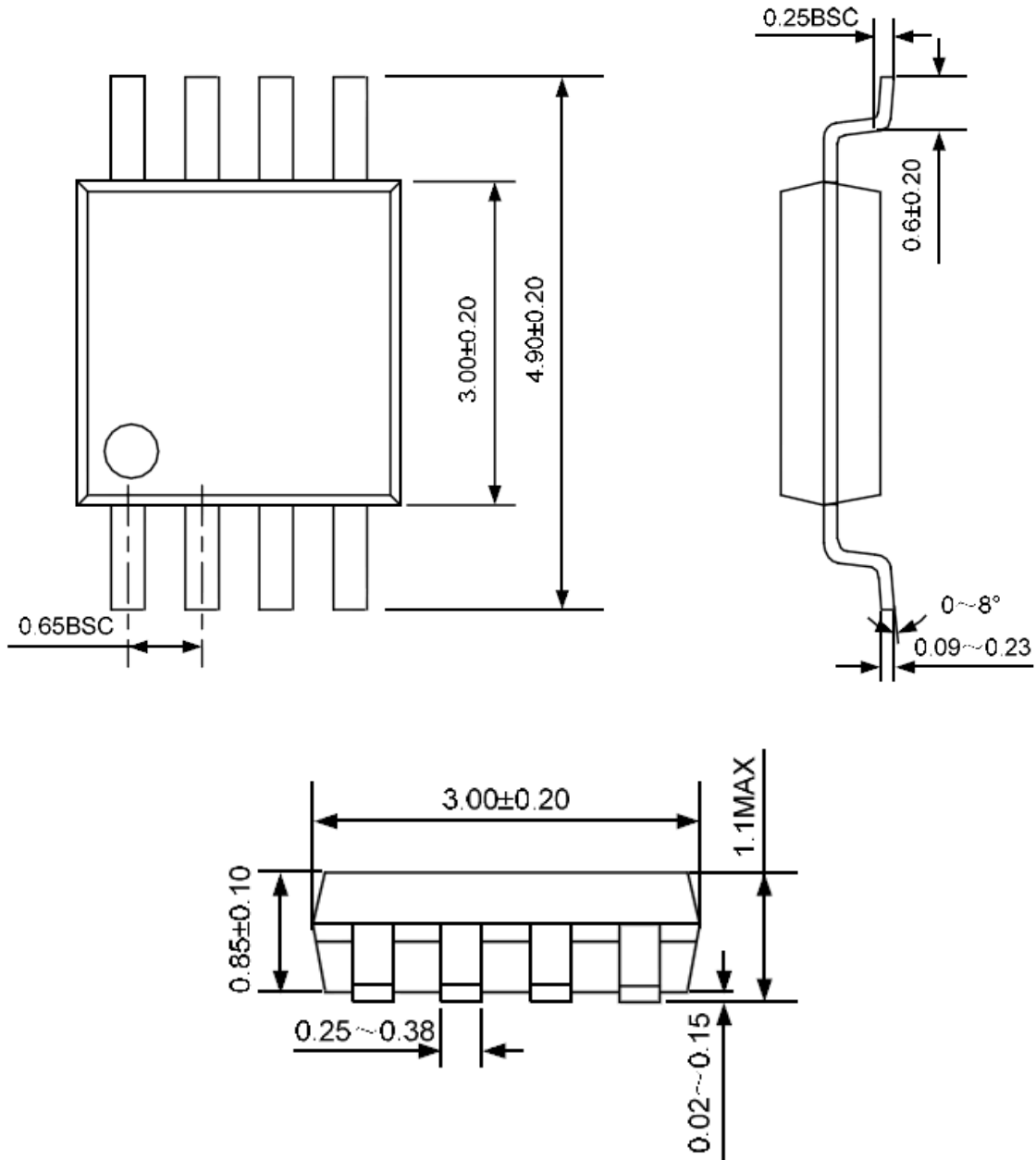


Transmission line pulse (TLP)





Package Information (MSOP-8L)



©2010 Alfa-MOS Technology Corp.
2F, No.80, Sec.1, Cheng Kung Rd., Nan Kang Dist., Taipei City 115, Taiwan (R.O.C.)
Tel : 886 2) 2651 3928
Fax : 886 2) 2786 8483
©<http://www.alfa-mos.com>